

Member-Applicant:



North American Prototype Modelers Ltd.

## NAPM Orientation guide

Dear member applicant,

**Welcome to NAPM** and thank you for your interest in our organization. The six-month\* probationary period is your opportunity to learn about the club's history, culture, and rules. It is also your responsibility to meet as many members as possible. It is the time where club members must learn about you and your modeling interests and skills. It is your opportunity to find where you see yourself contributing to the continuation of NAPM in the future. This form is your guide to independently engage in conversations with the many members who contribute to the ongoing operation of the club. Your mentor will assist you in this process. It is through these conversations you will begin to understand the culture at NAPM. In addition to completing this form and the implied conversations, you are encouraged to explore, ask questions, and involve yourself in projects and activities that will expand your understanding and interest in NAPM. By participating actively in this process, your investment in NAPM should provide the necessary attributes to assure your confirmation for membership. At the end of your probationary period, share this completed document with the club president or VP. This will give them notice to schedule a membership vote.

\*Probationary period may be extended by the BOD in special circumstances

Committee	Coordinator(s)	Signature	Date
<b>ADMINISTRATION DEPT.</b> <i>(How we run the club - 5000)</i> <i>(By-Laws, House Rules, Code of Conduct, etc.)</i>	Mark Ziebell Terry Kimes, Co-Chair	_____	_____
<b>PHYSICAL PLANT DEPT.:</b> <i>(More than just a layout-5500)</i>	James Hebner Dan Christiansen, Co-Chair	_____	_____
<b>ELECTRICAL DEPT.:</b> <i>(Power, control, &amp; wiring-6000)</i>	Mike Beckemeier Roger Sikorski, Co-Chair.	_____	_____
<b>SIGNALING DEPART.:</b> <i>(Is it a go? - 7500)</i>	Mark Ziebell	_____	_____
<b>Scenery &amp; Structures</b> <i>(What makes it pretty 7000)</i>	Al Houtz David Karkoski, Co-Chair	_____	_____
<b>PROMOTIONS DEPT.:</b> <i>(Making friends - 9000)</i>	Terry Kimes James Hebner, Co-Chair	_____	_____
<b>OPERATIONS DEPT.:</b> <i>(Like on the real RR's - 7500)</i>	Neal LeClaire Craig Willett, Co-Chair	_____	_____
<b>ROLLING STOCK DEPT.:</b> <i>(Standards &amp; Expects 8000)</i>	Rich Groeling Colin Mucha, Co-Chair	_____	_____
<b>TRACK DEPT.:</b> <i>(Keeping trains moving - 7100)</i>	Roger Sikorski	_____	_____
<b>WEB SITE:</b> <i>(IO Group Coordinator- 5080)</i>	Mike Beckemeier Jim Hebner, Co-Chair.	_____	_____
<b>MEMBER SVS (5060):</b>	Jack Kallman	_____	_____
<b>PROMOTIONS (9010):</b> <i>(How to get help - &amp;- Promotions)</i>	Terry Kimes	_____	_____
<b>ARCHITVIST/Librarian:</b>	Mark Mathu	_____	_____
<b>NEW MEMBER MENTOR COORDINATOR</b>		_____	_____

Complete as of \_\_\_ / \_\_\_ / \_\_\_ Probationer /S/ \_\_\_\_\_

# North American Prototype Modelers Request for Induction

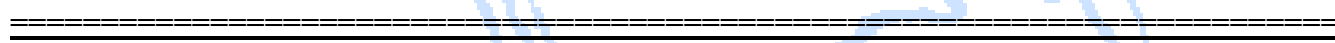
I, \_\_\_\_\_, having previously applied for admission to membership to The North American Prototype Modelers, Ltd., and having successfully completed the required six-month Probationary Period, do hereby apply for status as Full Active \_\_\_\_\_ Member.  
(Standard/Senior/Associate)

I understand that such status can be attained only by favorable vote by the active members of the club, and further, that it is contingent upon payment of a Founders Fee.

Applicant Signature: \_\_\_\_\_ Dated \_\_\_\_\_

Presiding Officer: \_\_\_\_\_ Dated \_\_\_\_\_

Initiation fee Due upon Election: \$ \_\_\_\_\_



**NAPM USE ONLY:**

Completed Orientation form presented \_\_\_\_\_

Dues are current as of \_\_\_\_\_, Treasurer \_\_\_\_\_

Action meeting Scheduled \_\_\_\_\_, Deferrals (If any) \_\_\_\_\_

Vote on Action \_\_\_\_\_ Inducted as \_\_\_\_\_ member \_\_\_\_\_  
(Yes/No) (type of membership) (Date)

NAPM Shirt \_\_\_\_\_ Size \_\_\_\_\_ By \_\_\_\_\_ on \_\_\_\_\_  
(Yes/No) (Date)